



HOSHIZAKI

IM-100NE / IM-100WNE CUBE ICE MAKER

Product Description

The IM-100NE (air cooled) and the IM-100WNE (water cooled) are self contained ice machines. These models maintain low levels of water- and energy consumption.



- A closed water circuit offers the ultimate contamination protection, by reducing the number of points at which impurities can enter the ice making process.
- Hoshizaki ice makers are micro computer controlled, controlling the ice making process to perform at its best under varying circumstances, without having to make physical adjustments.
- A stainless steel exterior with integrated door handles provides a hygienic and high quality finish.
- Foam injected polyurethane for insulation (HFC free), helps preserve the quality and consistency of the ice produced, reducing the number of production cycles.
- An easily cleanable air filter allows end users to carry out a routine cleaning schedule, extending product life expectancy and reducing the frequency and costs of maintenance call-outs.
- Removable door gaskets help prevent any heat and contamination from entering the bin as well as making your Hoshizaki product easy to clean and maintain.

Available Models

IM-100NE (Air Cooled)
IM-100NE-21 (Air Cooled)
IM-100NE-23 (Air Cooled)
IM-100WNE (Water Cooled)
IM-100WNE-21 (Water Cooled)
IM-100WNE-23 (Water Cooled)

Ice Cubes

Model	Size	Shape
IM-100NE / WNE	Large (Standard) 28 x 28 x 32 mm	
IM-100NE-23	Medium Large (23) 28 x 28 x 23 mm	

Bins

Model	Type of Bin	Max. Bin Capacity
IM-100NE (-23)	Self contained	50kg
IM-100WNE	Self contained	50kg

Production

Model	Ice Production per 24h (Dimple Size)	Temperature	Ice Production per Cycle	Water Consumption per 24h *
IM-100NE (Air Cooled)	Approx. 95kg (15mm) / 85kg (5mm)	AT.10 °C, WT.10 °C	Approx. 1,8kg / 80pcs	Approx. 0,45m ³ Approx. 0,21m ³ Approx. 0,18m ³
	Approx. 93kg (15mm) / 83kg (5mm)	AT.21 °C, WT.15 °C		
	Approx. 84kg (15mm) / 73kg (5mm)	AT.32 °C, WT.21 °C		
IM-100WNE (Water Cooled)	Approx. 97kg (15mm) / 90kg (5mm)	AT.10 °C, WT.10 °C	Approx. 1,8kg / 80pcs	Approx. 0,45m ³ Approx. 0,21m ³ Approx. 0,19m ³
	Approx. 95kg (15mm) / 86kg (5mm)	AT.21 °C, WT.15 °C		
	Approx. 88kg (15mm) / 78kg (5mm)	AT.32 °C, WT.21 °C		

*) for ice making purposes only

Two year warranty

For more information visit our website at www.hoshizaki-europe.com
Hoshizaki Europe B.V. retains the right to change products and their specifications without prior notice.

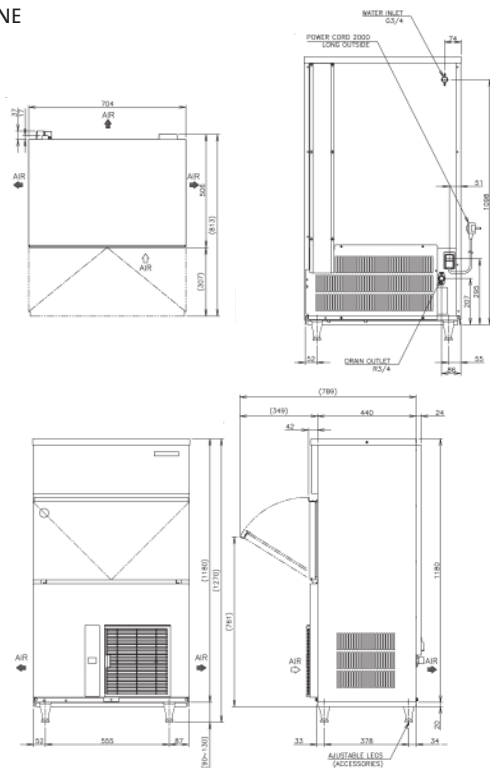




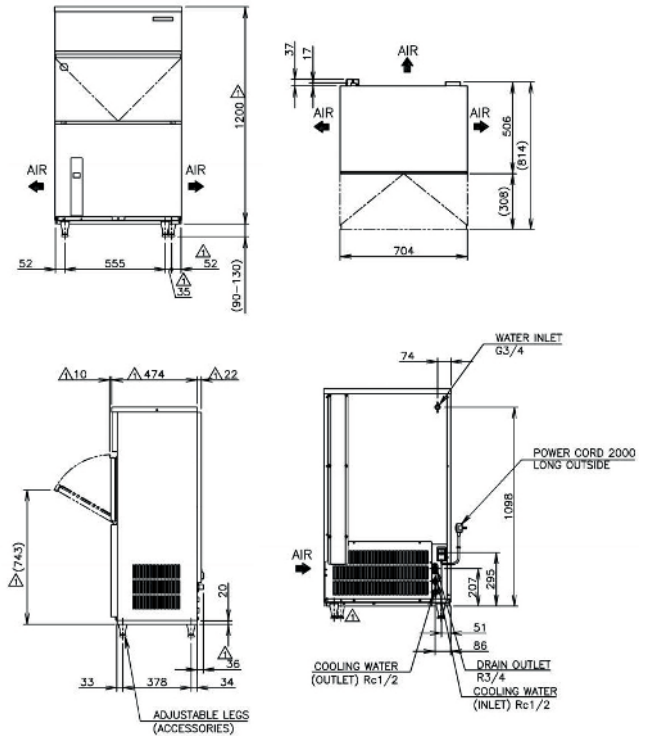
HOSHIZAKI

IM-100NE / IM-100WNE CUBE ICE MAKER

IM-100NE



IM-100WNE



Specification	IM-100NE (Air Cooled)	IM-100WNE (Water Cooled)
AC Supply Voltage	1 PHASE 220-240V 50Hz	1 PHASE 220-240V 50Hz
Amperage (AT.32°C, WT.21°C)	4.1A	3.9A
Electric Consumption (AT.32°C, WT.21°C)	630W	600W
Exterior	Stainless Steel, Galvanized Steel (Rear)	Stainless Steel, Galvanized Steel (Rear)
Insulation	Polyurethane Foam	Polyurethane Foam
Insulation Foam Blowing Agent	Water Blown	Water Blown
Connections-Electric	Y-Type Con. (with CONT. Plug or UK Plug)	Y-Type Con. (with CONT. Plug or UK plug)
Connections-Water Supply	Inlet 3/4" (connected at rear side)	Inlet 3/4" (connected at rear side)
Connections-Drain	Outlet 3/4" (connected at rear side)	Outlet 3/4" (connected at rear side)
Ice Making System	Closed Cell Type	Closed Cell Type
Condenser	Air-cooled	Water-cooled, Tube in Tube type
Heat Rejection (AT.32°C, WT.21°C)	1180W	-
Refrigerant Control	Thermostatic Expansion Valve	Thermostatic Expansion Valve
Refrigerant Charge	R134a	R134a
Ice Making Control System	Thermistor, Timer	Thermistor, Timer
Bin Control System	Microswitch with Time Delay Board	Microswitch with Time Delay Board
Electrical Protection	Class I Appliance, 5A Fuse	Class I Appliance, 5A Fuse
Compressor Protection	Auto- reset Overload Protector	Auto- reset Overload Protector
Ice Maker Protection	Interlock by Controller Board	Interlock by Controller Board
Dimensions Product excl. Packaging	704 x 506 x 1200 (W x D x H, mm)	704 x 506 x 1200 (W x D x H, mm)
Dimensions Product incl. Packaging	830 x 620 x 1395 (W x D x H, mm)	805 x 580 x 1375 (W x D x H, mm)
Weight Gross / Net	84 kg / 76 kg	83 kg / 74 kg

Operation Requirements	
Ambient Temperature	1 - 40°C
Water Supply Temperature	5 - 35°C
Water Supply Pressure	0,7-7,8 bar (0,07-0,78MPa)
Voltage Range	Rated Voltage ± 6%

Accessories
Scoop
Leg
Installation Kit

For more information please contact your local sales office:

Hoshizaki Belgium:
Hoshizaki Deutschland:
Hoshizaki France:
Hoshizaki Iberia:
Hoshizaki Middle East:

info@hoshizaki.be
info@hoshizaki.de
info@hoshizaki.fr
info@hoshizaki.es
sales@hoshizaki.ae

Hoshizaki Nederland:
Hoshizaki United Kingdom:
Other countries:

sales@hoshizaki.nl
uksales@hoshizaki.co.uk
sales@hoshizaki.nl

www.hoshizaki-europe.com